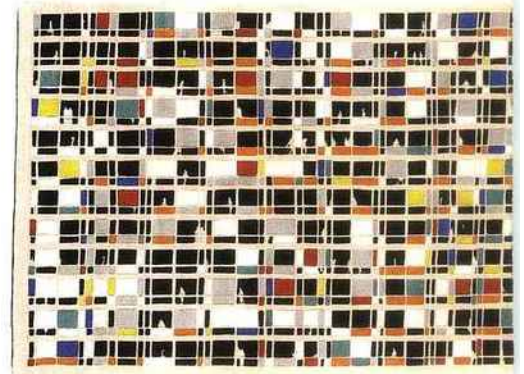
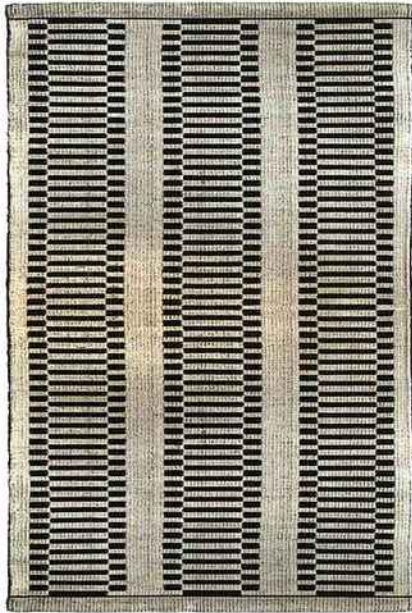
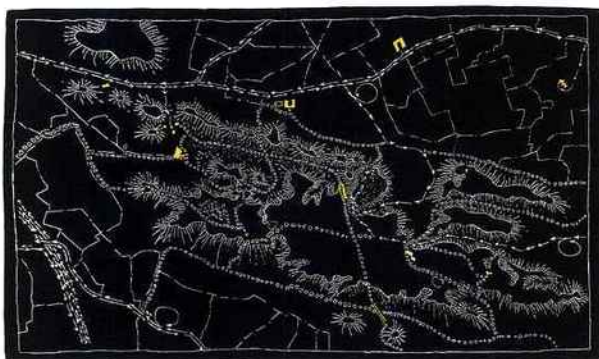


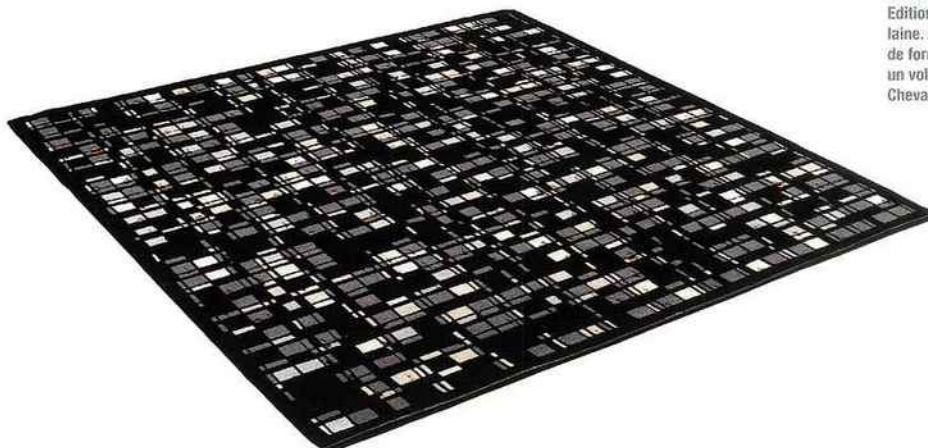
"Grimaud",
100% coton.
Manufacture
Cogolin



"Pistes", design
Nicolas Michelin.
Laine et soie.
Chevalier Edition



"Blow-up", design
Stéphane Maupin en
collaboration avec
Jérôme Santel. Laine
et soie, version nuit.
Chevalier Edition



"Build", design
Jakob+MacFarlane.
Edition limitée,
laine. Assemblage
de formes créant
un volume évolutif.
Chevalier Edition

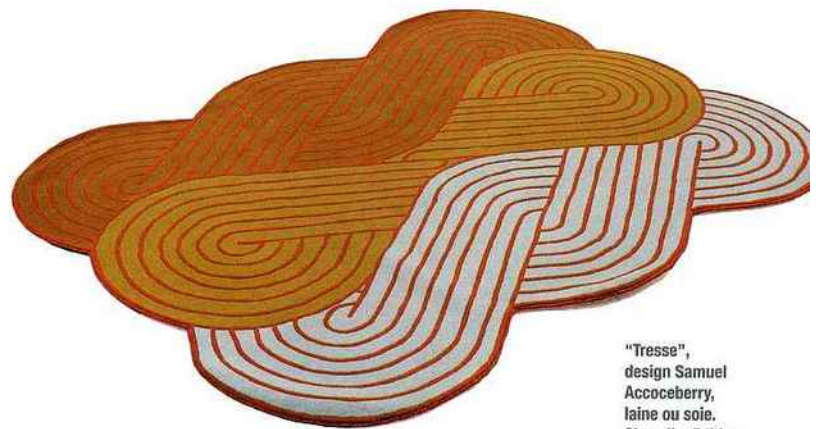


"Blow-up", design Stéphane Maupin en collaboration avec Jérôme Santel. Laine et soie, version jour. Chevalier Edition

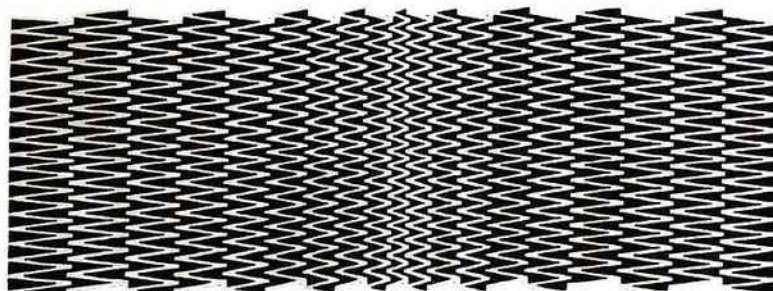
"Puzzle urbain", design Beckmann N'Thépè. Laine et/ou soie. Chevalier Edition

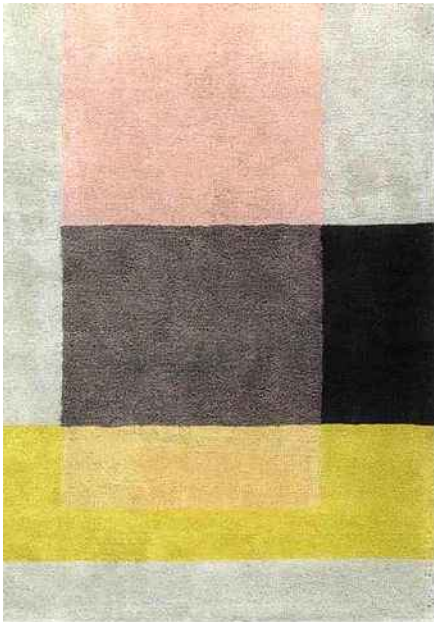


"Zigzag", design Dominique Perrault et Gaëlle Lauriot-Prévoist. Laine et/ou soie. Chevalier Edition



"Tresse", design Samuel Accoceberry, laine ou soie. Chevalier Edition





"Magyar",
design Mathias
Kiss, 100%
laine Bellaryas.
Manufacture de
Moroges



"Colour Carpet
Carpet", design
Schotten&Baajings,
100% laine. Hay



"Ecailles",
design
Emmanuel
Gallina.
Toulemonde
Bochart



"Rue des
Abbeses",
100% laine.
Un Tapis à Paris